



Railway Track and Signalling

**JHR
NSW Country Regional Network**

Section: North

Go to page 2 for index

G F Vincent 2012

Last Revised
10 March 2020

Diagram: 1564, 5

CRN NORTH TRACK & SIGNAL INDEX

Page	Drawing	Section	Page	Drawing	Section
1	Cover	<i>CRN North</i>			
2		Index			
3	<i>Sect. 05</i>	<i>Old Main North (Werris Creek - Armidale)</i>			
4	N568	Werris Creek (<i>ARTC DIN</i>)			
5	N1561	Belgamba - Warral			
6	N1562	West Tamworth - Tamworth			
7	N1563	Nemingah - Kootingal			
8	N1564	Walcha Road - Uralla			
9	N1565	Kelly's Plains - Armidale			
10	<i>Sect. 06</i>	<i>Weelelah Branch</i>			
11	N598	Camurra West (<i>ARTC DIN</i>)			
12	N1585	Camurra West - Weelelah			
13	<i>Sect. 07</i>	<i>Burren Junction Branches</i>			
14	N594	Narrabri Triangle (<i>ARTC DIN</i>)			
15	N1591	Narrabri West - Culgoora			
16	N1592	Wee Waa - Burren Junction			
17	N1593	Cryon - Walgett Wheat			
18	N1594	Old Burren - Merrywinebone			

LINE	Main North Line
SECTION	Werris Creek - Armidale
PAGES	1561 - 1565

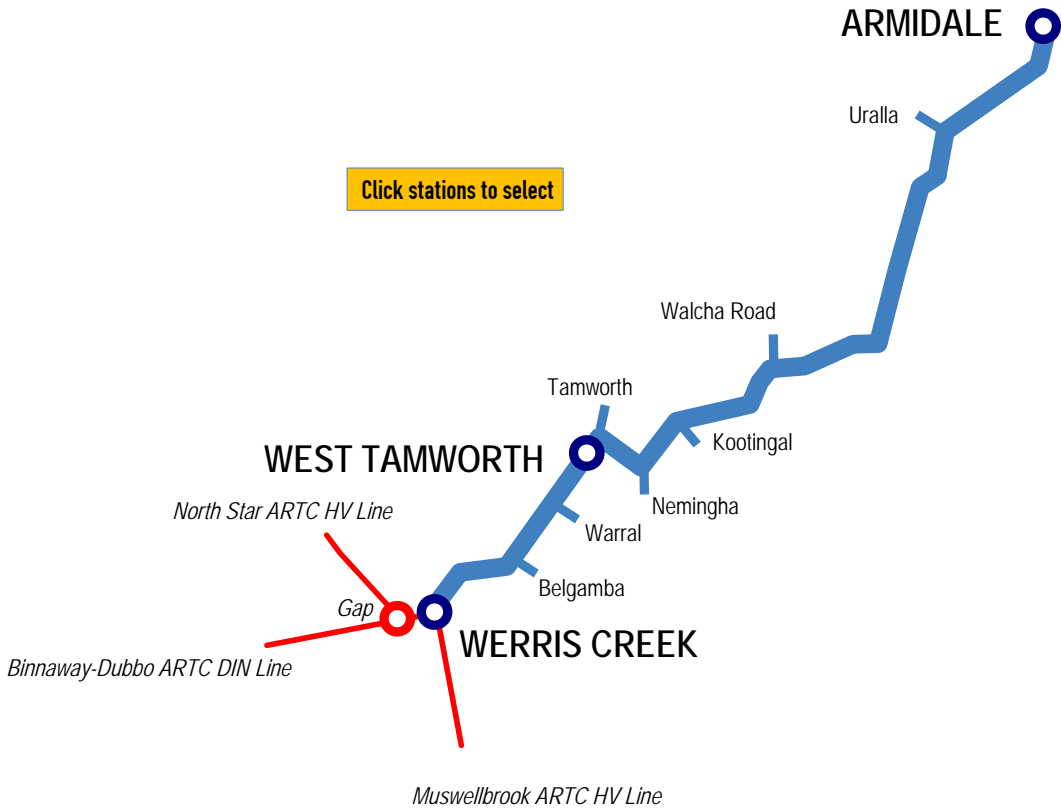
New South Wales *CRN*

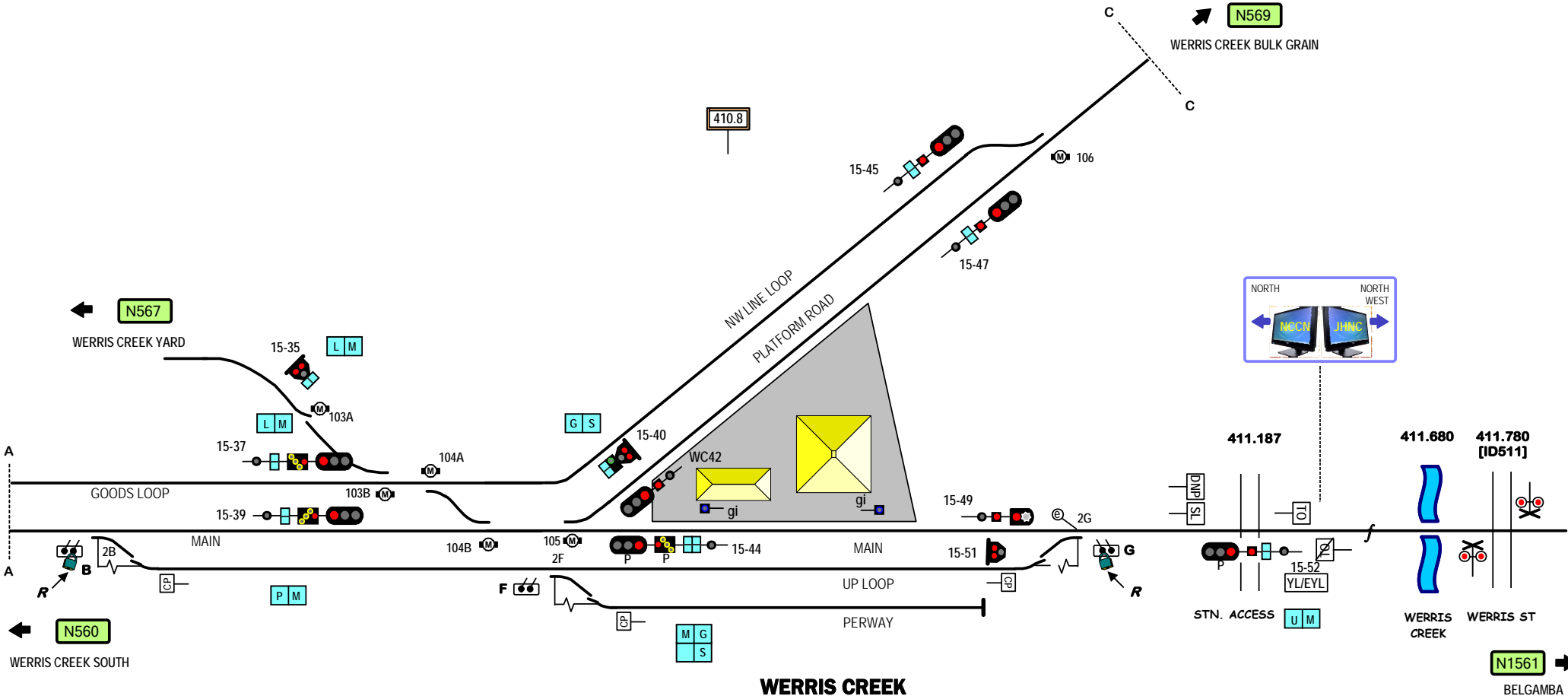


▲ Home



■ Another Line





Signal Locations

Home Support

© 2008 G F Vincent

STANDARD GAUGE TRACK
WERRIS CREEK

N568

N1561 →
BELGAMBA
CRN line to
ARMIDALE

← N568

WERRIS CREEK

424.347

424.472
[ID149]

426.054
[ID510]

428.050

428.428

429.8

436.675
[ID536]

BELGAMBA

Hardstand

**BELGAMBA
MAIN LINE LOADER**

(DURI)

ANSTEYS CREEK
CURRABUBULA COMMON RD
(STATION ST)

TAMWORTH RD

CURRABUBULA CREEK

CURRABUBULA ST

(CURRABUBULA)

WARRAL

438.971

441.986

442.810

2C

443.9

Silos

344m.

WARRAL

441.018
[ID136]

WARRAL RD

445.288

444.862

445.362

TIMUMBURI CREEK

WEST TAMWORTH

447.202

447.371

WARRAL

N1562 →

WEST TAMWORTH

Signal Locations	
Home	Support

© 2010 G F Vincent

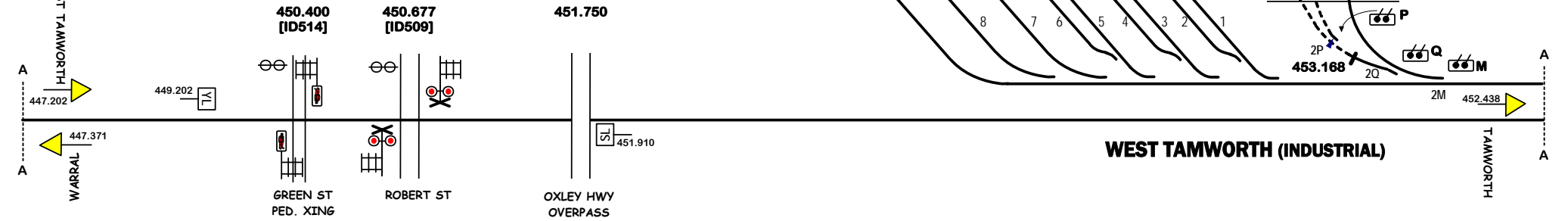
STANDARD GAUGE TRACK
(CURRABUBULA) - WARRAL

N1561

N1561

WARRAL

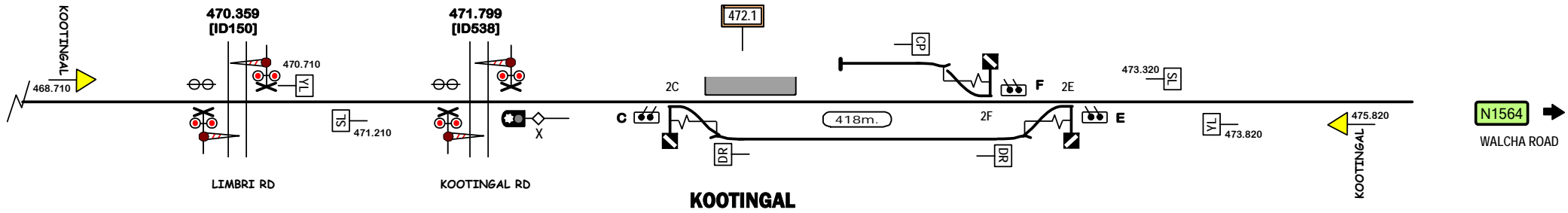
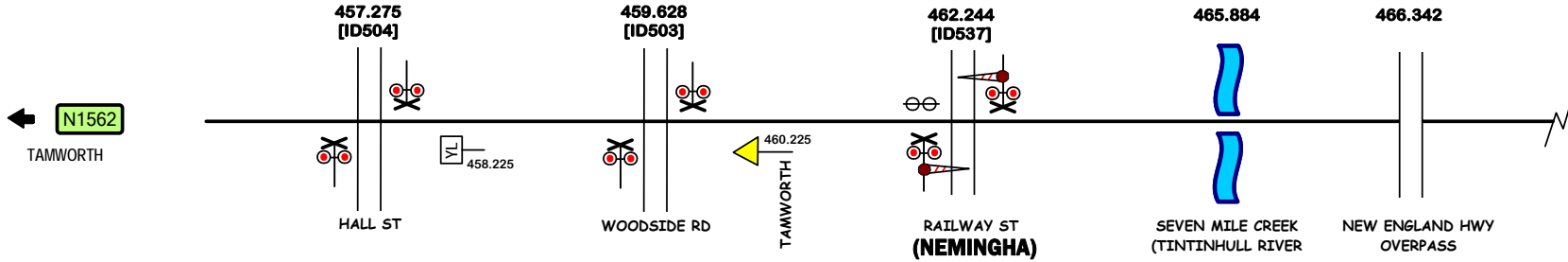
WEST TAMWORTH



© 2010 G F Vincent

STANDARD GAUGE TRACK
TAMWORTH - WALCHA ROAD

N1562



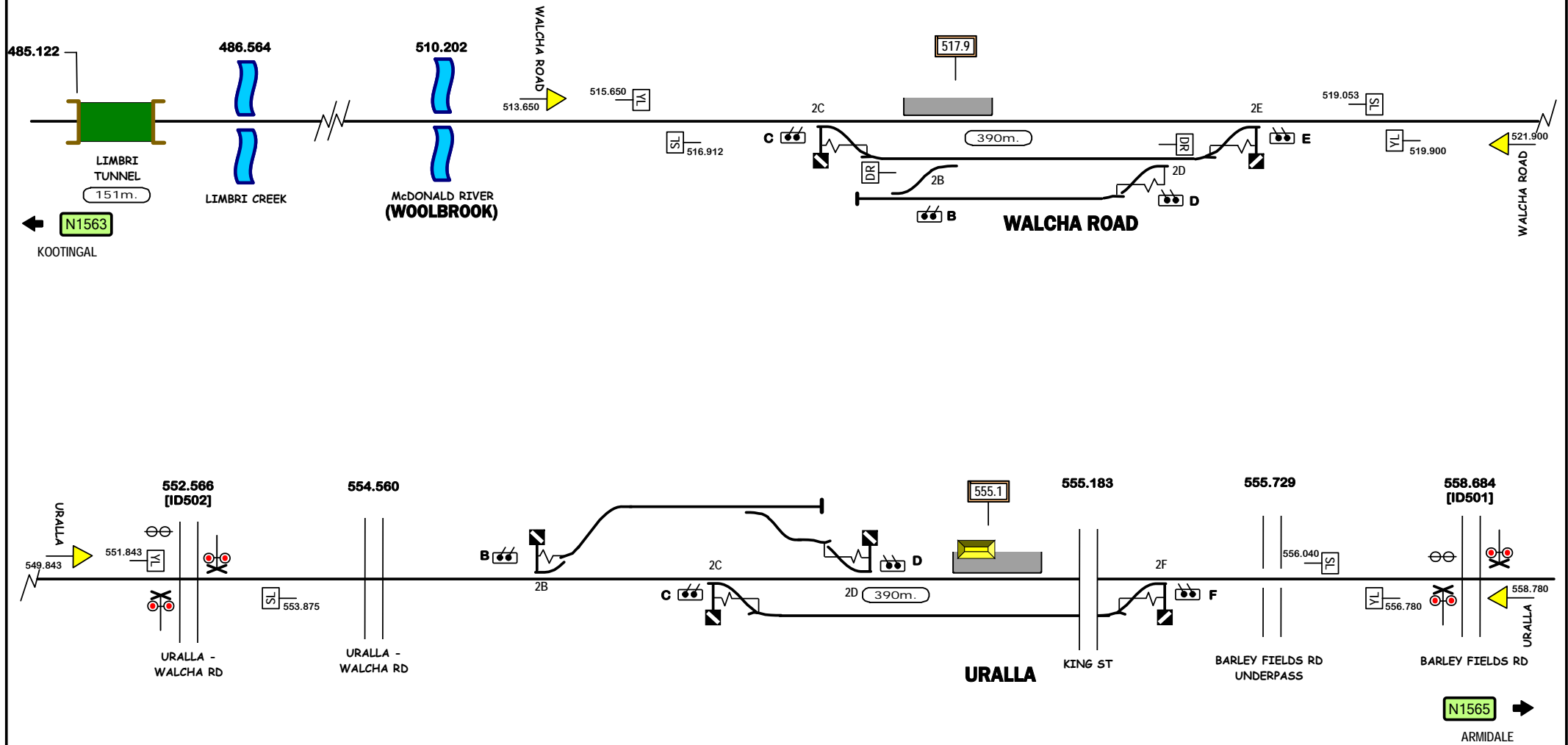
Signal Locations

Home Support

© 2010 G F Vincent

STANDARD GAUGE TRACK
NEMINGHA - KOOTINGAL

N1563

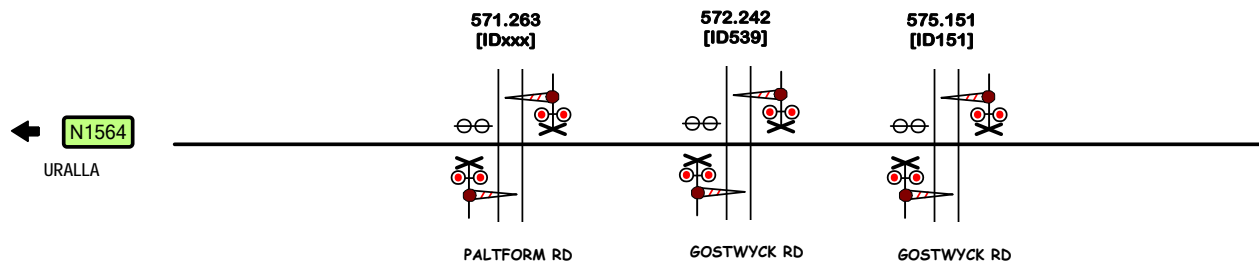


Signal Locations	
Home	Support

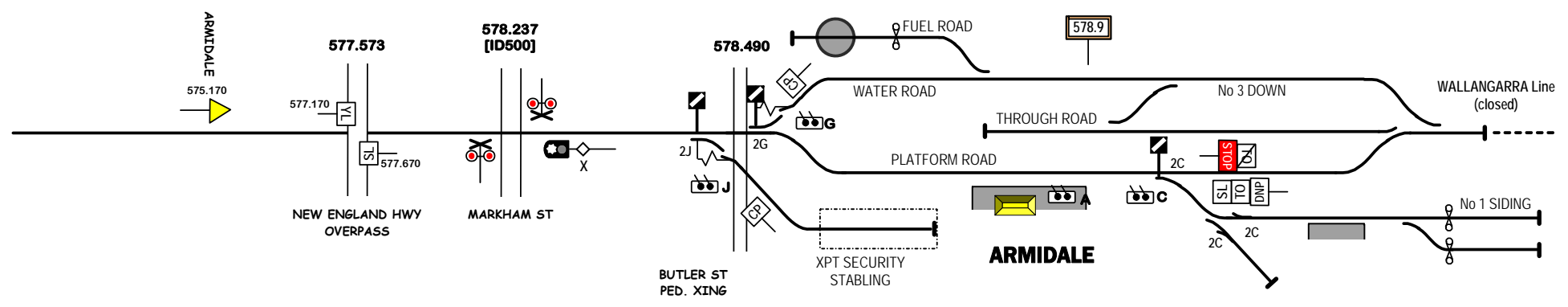
© 2010 G F Vincent

STANDARD GAUGE TRACK
WALCHA ROAD - URALLA

N1564



(KELLY'S PLAINS)



STANDARD GAUGE TRACK
KELLY'S PLAINS - ARMIDALE

Signal Locations

Home Support

© 2020 G F Vincent

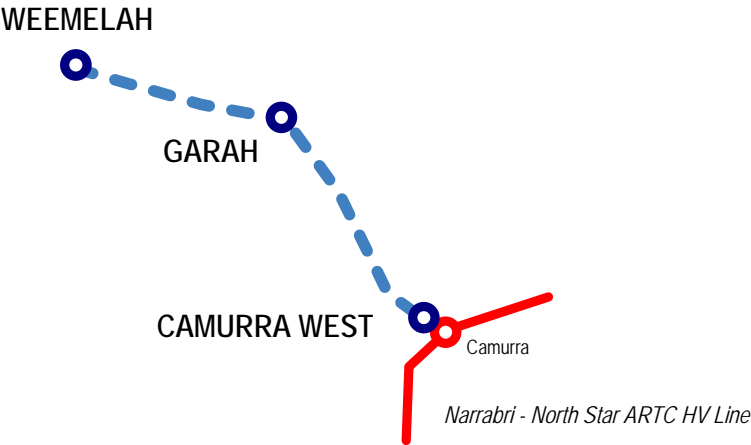
N1565

LINE	Weemelah Branch
SECTION	Camurra West- Weemelah
PAGES	1585

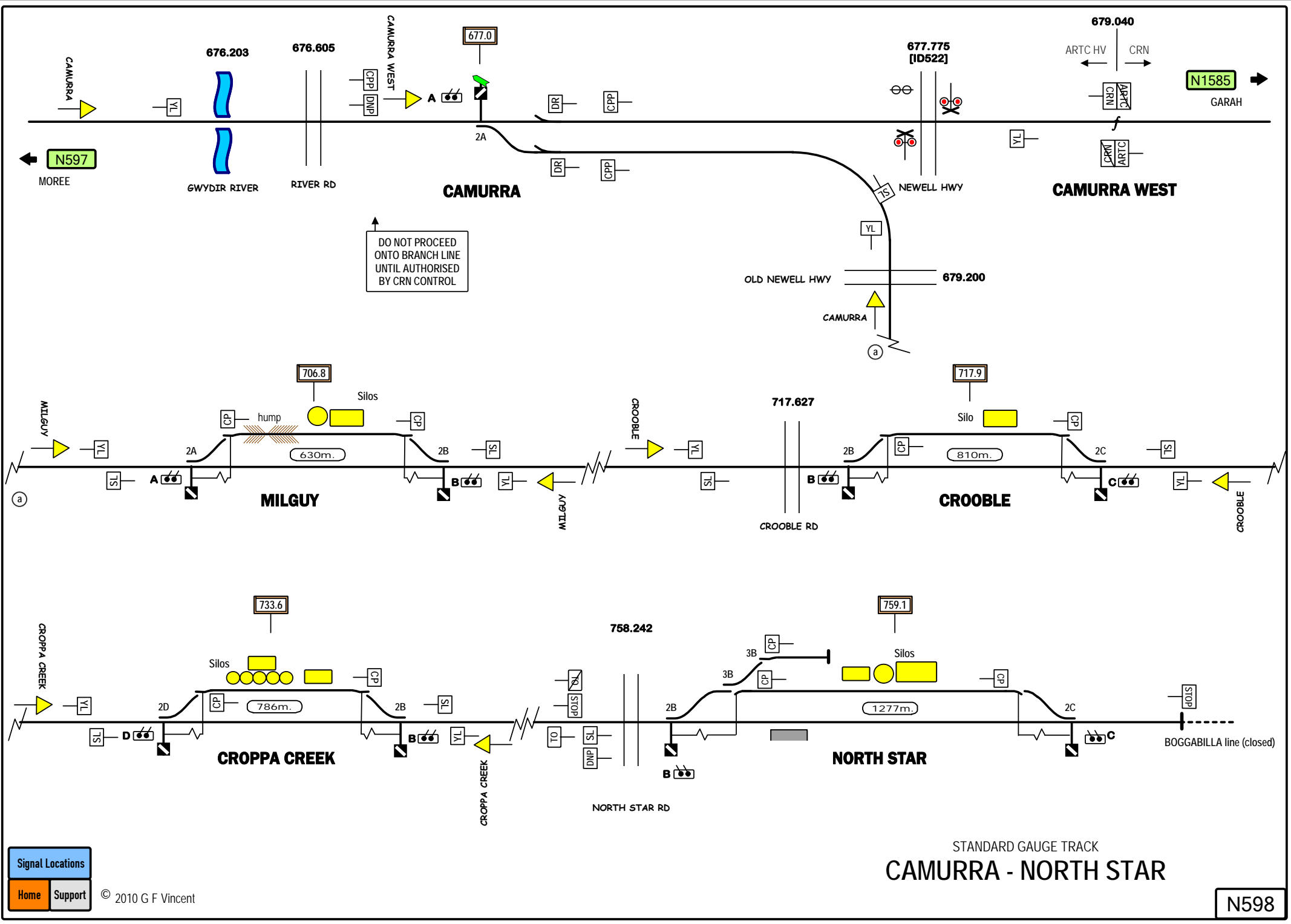
New South Wales *CRN*

▲ Home

■ Another Line



Click stations to select



DO NOT PROCEED ONTO BRANCH LINE UNTIL AUTHORISED BY CRN CONTROL

Signal Locations

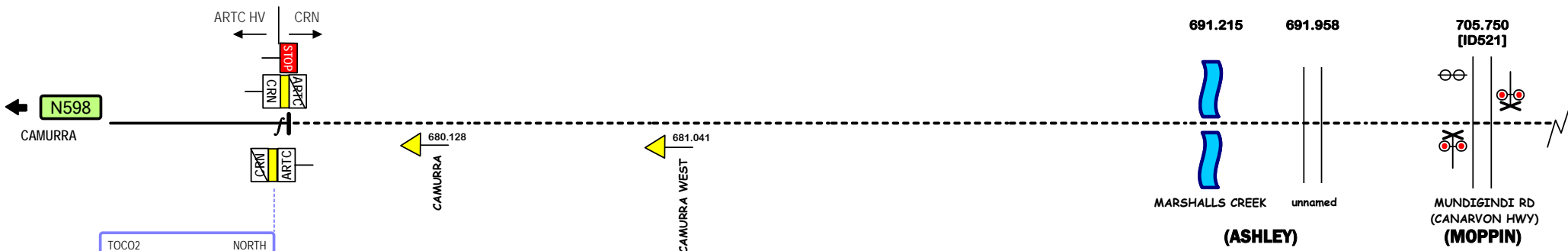
Home Support

© 2010 G F Vincent

STANDARD GAUGE TRACK
CAMURRA - NORTH STAR

N598

679.039
CAMURRA WEST



Signal Locations

Home Support

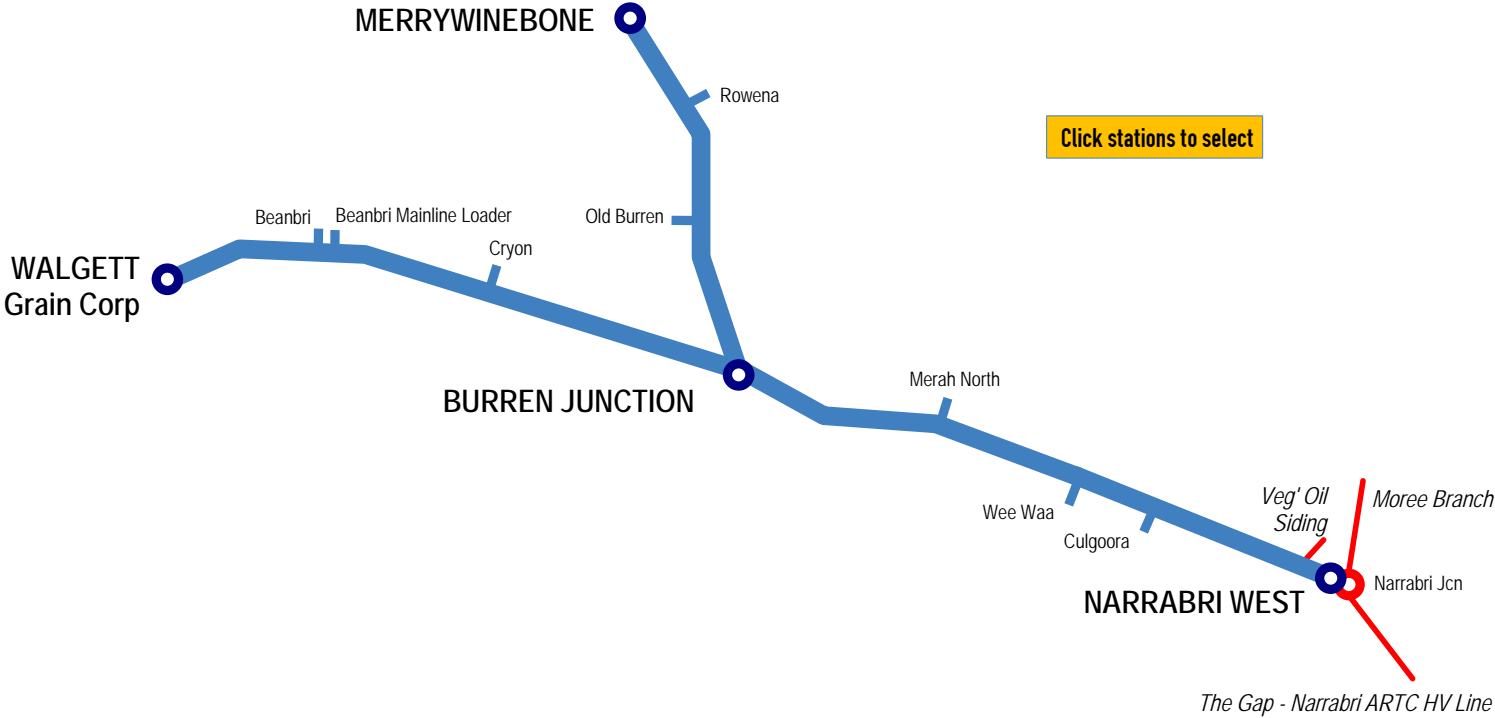
LINE	Burren Junction Lines
SECTION	Narrabri West - Walgett / Merrywinebone
PAGES	1591-1594

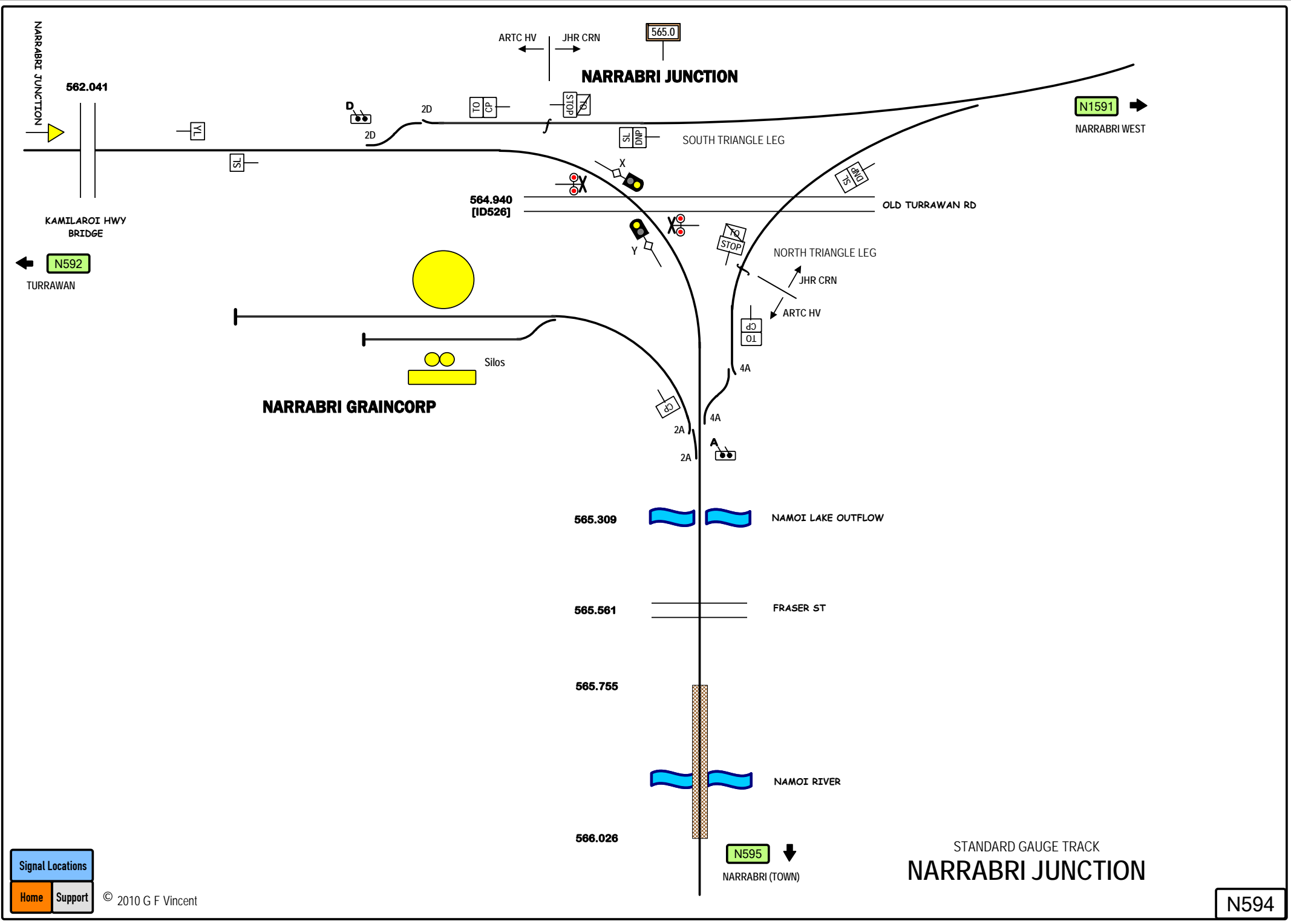
New South Wales *CRN*



▲ Home

■ Another Line





NARRABRI JUNCTION

562.041

ARTC HV JHR CRN

565.0

NARRABRI JUNCTION

N1591 →

NARRABRI WEST

SOUTH TRIANGLE LEG

KAMILAROI HWY BRIDGE

564.940 [ID526]

OLD TURRAWAN RD

N592 ←

TURRAWAN

NORTH TRIANGLE LEG

NARRABRI GRAINCORP

Silos

JHR CRN

ARTC HV

565.309

NAMOI LAKE OUTFLOW

565.561

FRASER ST

565.755

NAMOI RIVER

566.026

N595 ↓

NARRABRI (TOWN)

STANDARD GAUGE TRACK

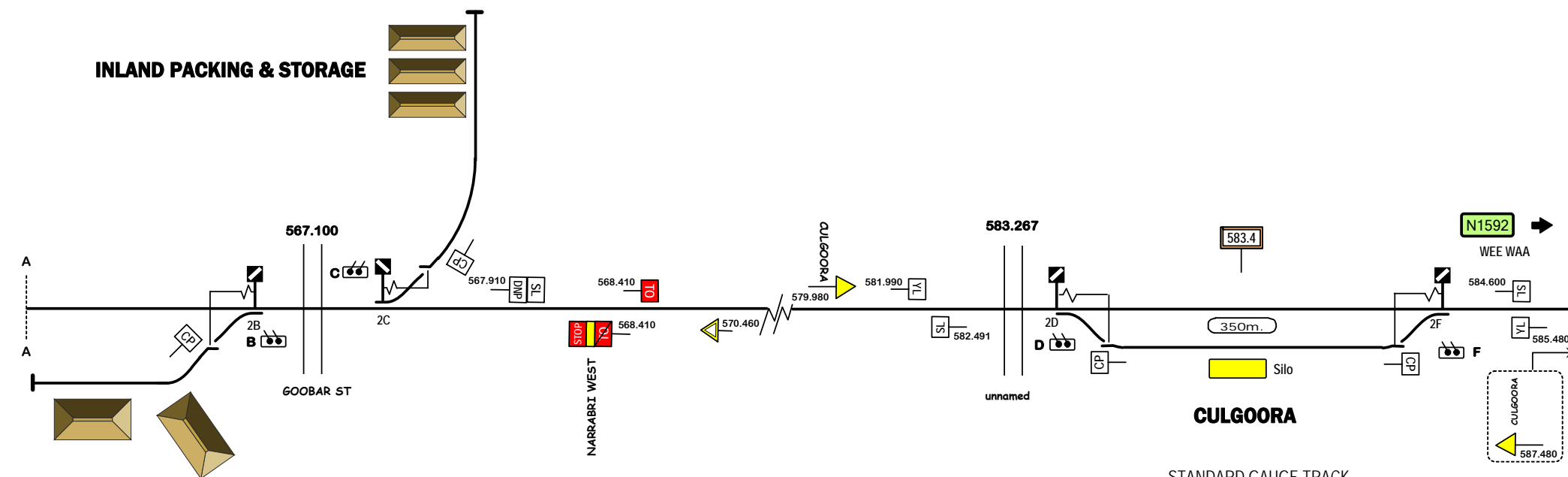
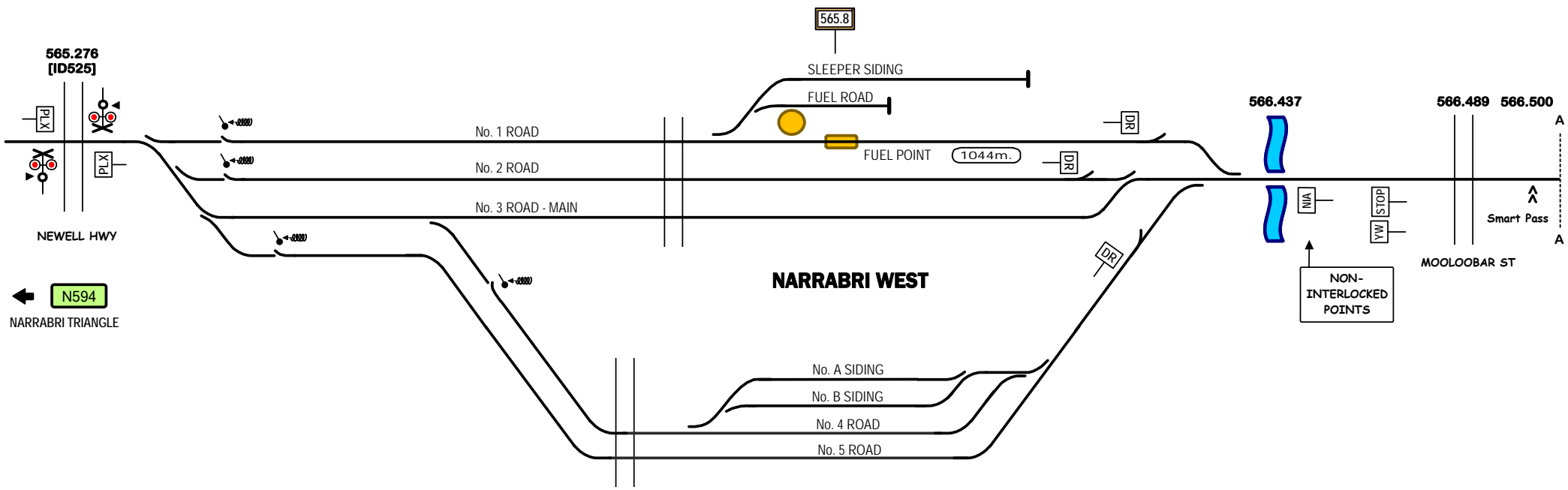
NARRABRI JUNCTION

Signal Locations

Home Support

© 2010 G F Vincent

N594

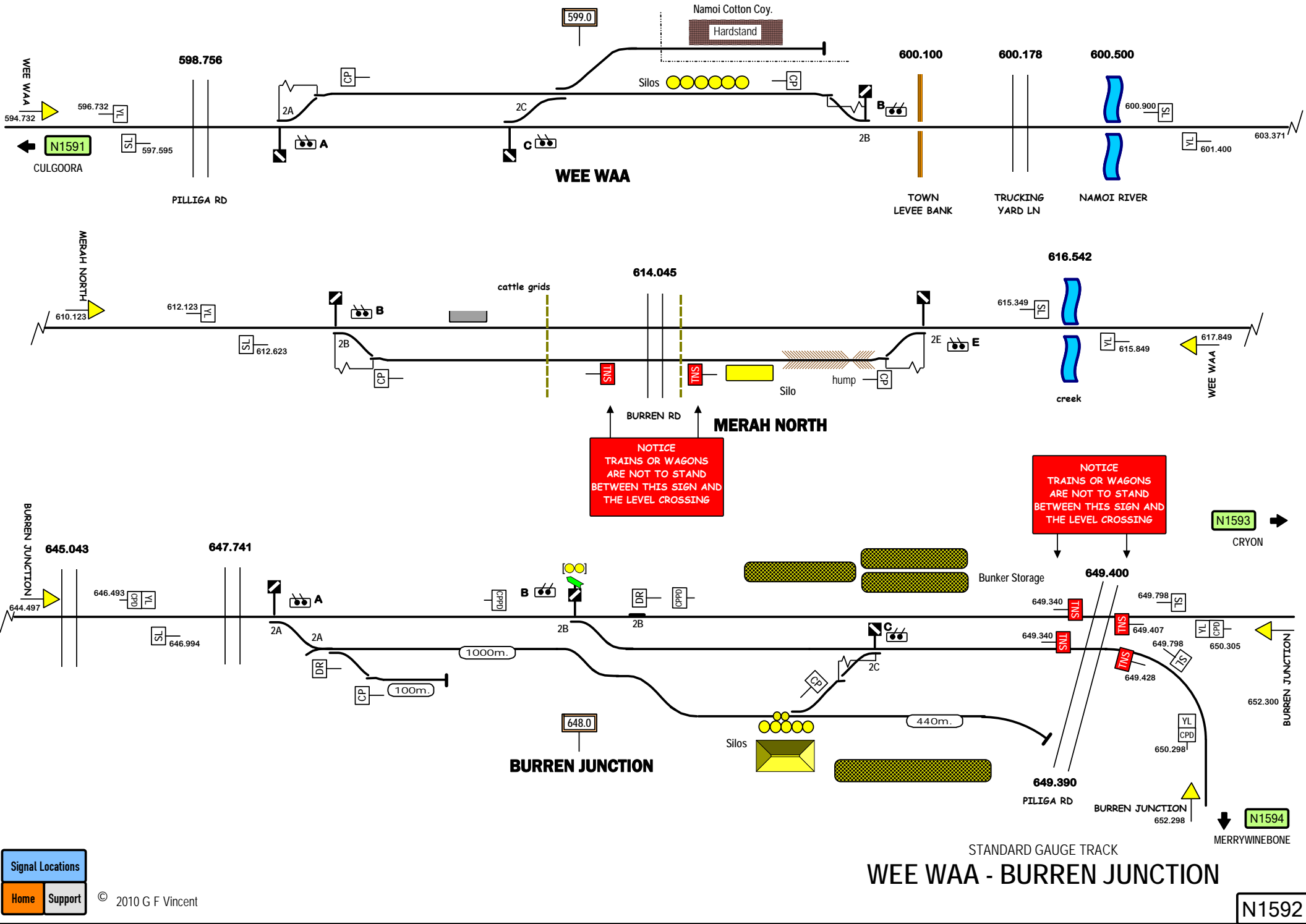


Signal Locations

Home Support

© 2010 G F Vincent

STANDARD GAUGE TRACK
NARRABRI WEST - CULGOORA



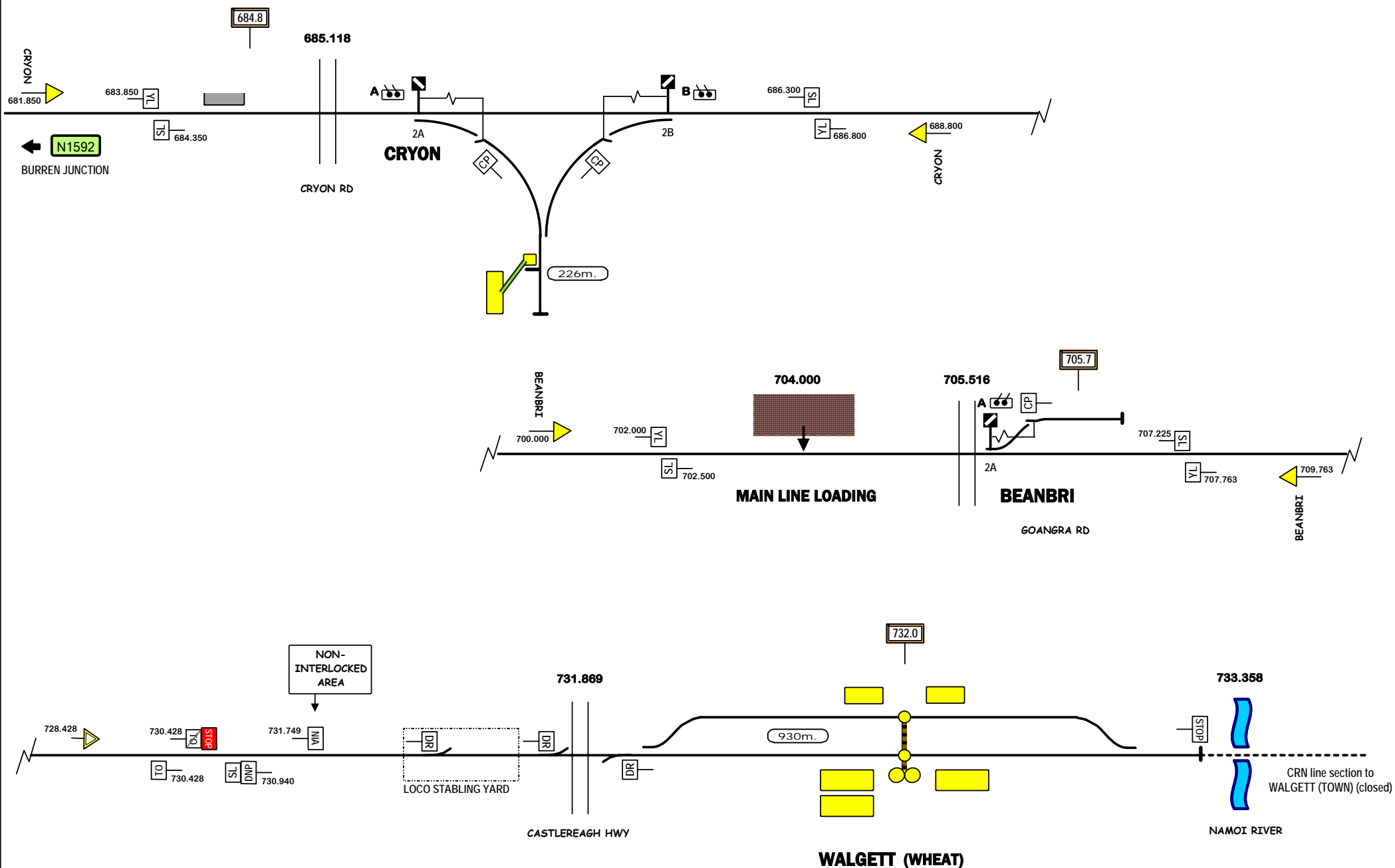
Signal Locations

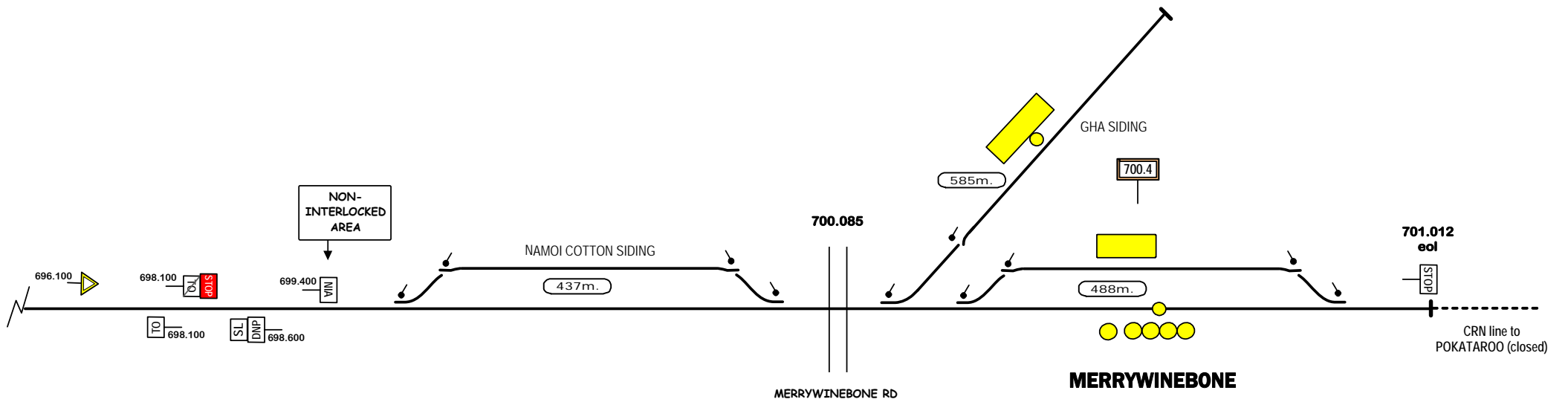
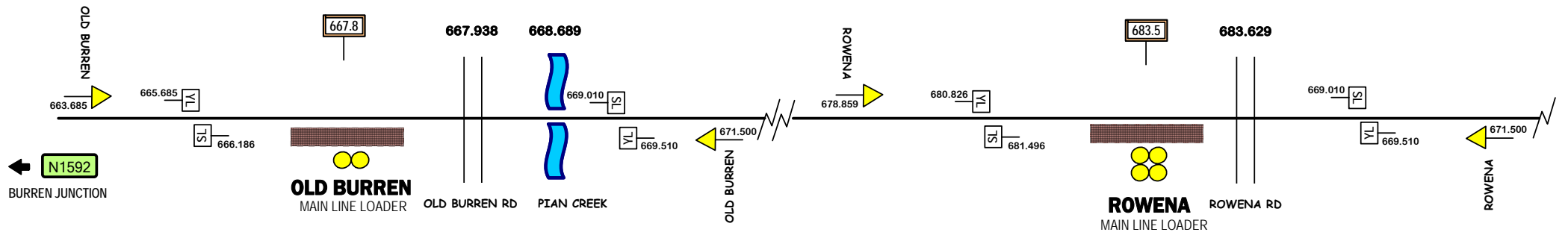
Home Support

© 2010 G F Vincent

STANDARD GAUGE TRACK
WEE WAA - BURREN JUNCTION

N1592





Signal Locations	
Home	Support

© 2010 G F Vincent

STANDARD GAUGE TRACK
OLD BURREN - MERRYWINEBONE

N1594